



# LOCATION HQ

More information available on the [Location HQ website](https://www.locationhq.co.uk)

Tel: +44 (0) 203 302 0664 | E-mail: [info@locationhq.co.uk](mailto:info@locationhq.co.uk)

REF: 356812 REGION: London DISTANCE FROM LONDON: 15 Miles from the M25



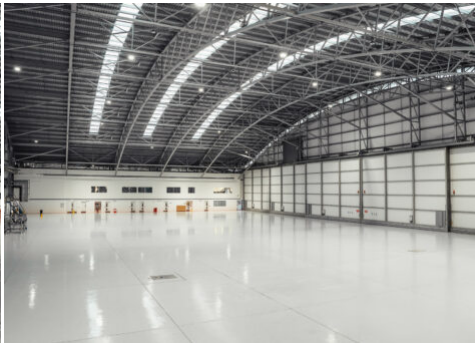
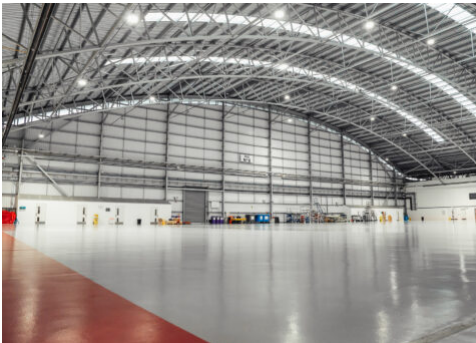
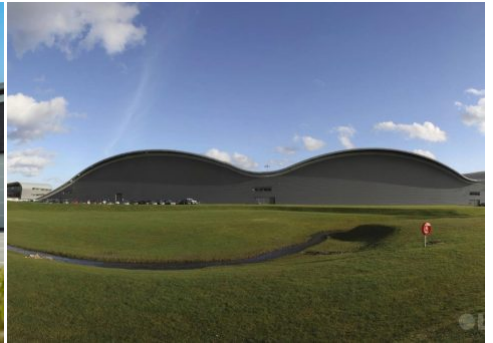


# LOCATION HQ

More information available on the [Location HQ website](https://www.locationhq.co.uk)

Tel: +44 (0) 203 302 0664 | E-mail: [info@locationhq.co.uk](mailto:info@locationhq.co.uk)

REF: 356812 REGION: London DISTANCE FROM LONDON: 15 Miles from the M25





# LOCATION HQ

More information available on the [Location HQ website](#)

Tel: +44 (0) 203 302 0664 | E-mail: [info@locationhq.co.uk](mailto:info@locationhq.co.uk)

REF: 356812 REGION: London DISTANCE FROM LONDON: 15 Miles from the M25





# LOCATION HQ

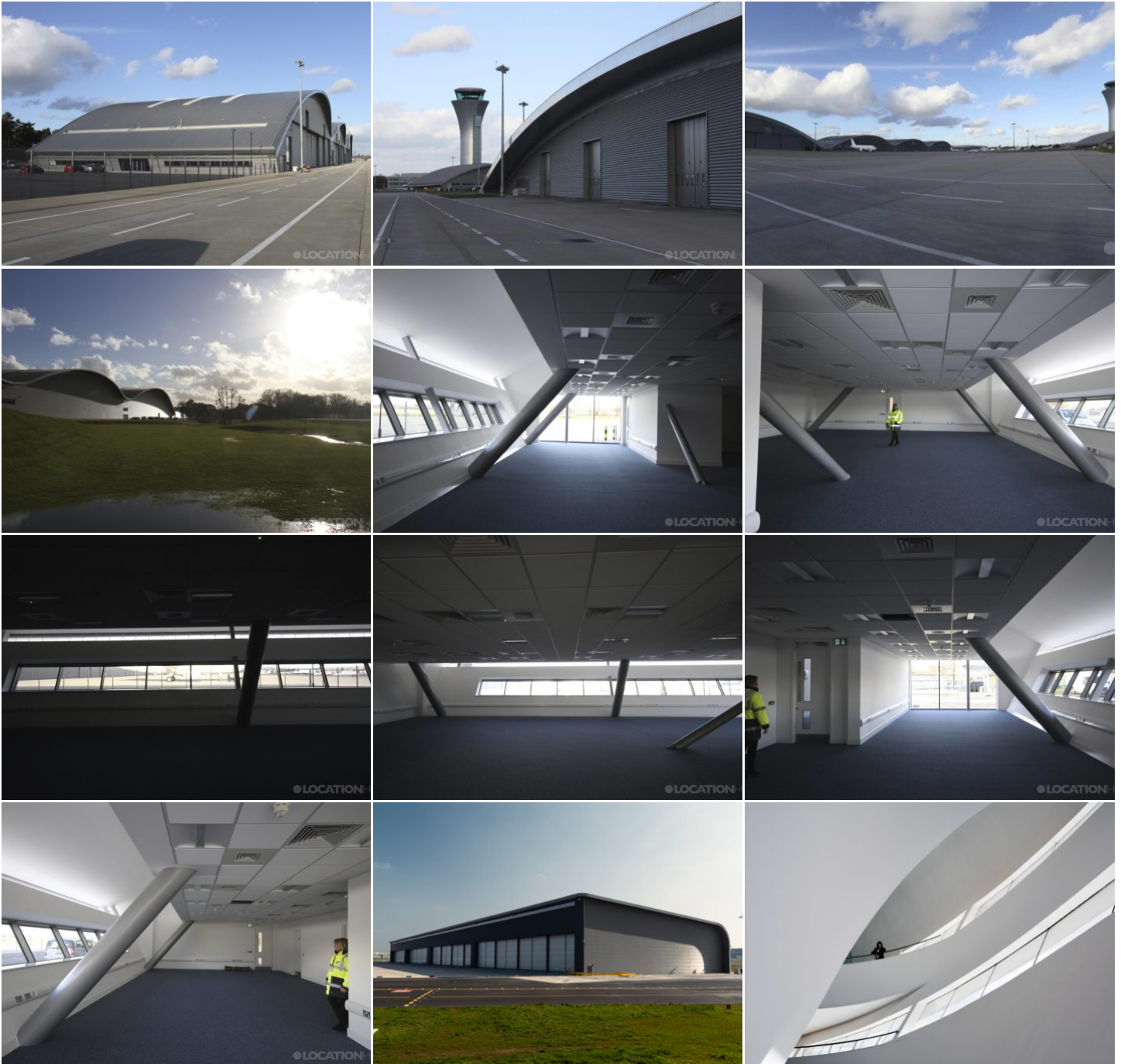
[More information available on the Location HQ website](#)

Tel: +44 (0) 203 302 0664 | E-mail: [info@locationhq.co.uk](mailto:info@locationhq.co.uk)

REF: 356812 REGION: London DISTANCE FROM LONDON: 15 Miles from the M25









# LOCATION HQ

[More information available on the Location HQ website](#)

Tel: **+44 (0) 203 302 0664** | E-mail: [info@locationhq.co.uk](mailto:info@locationhq.co.uk)

REF: 356812    REGION: London    DISTANCE FROM LONDON: 15 Miles from he M25

