

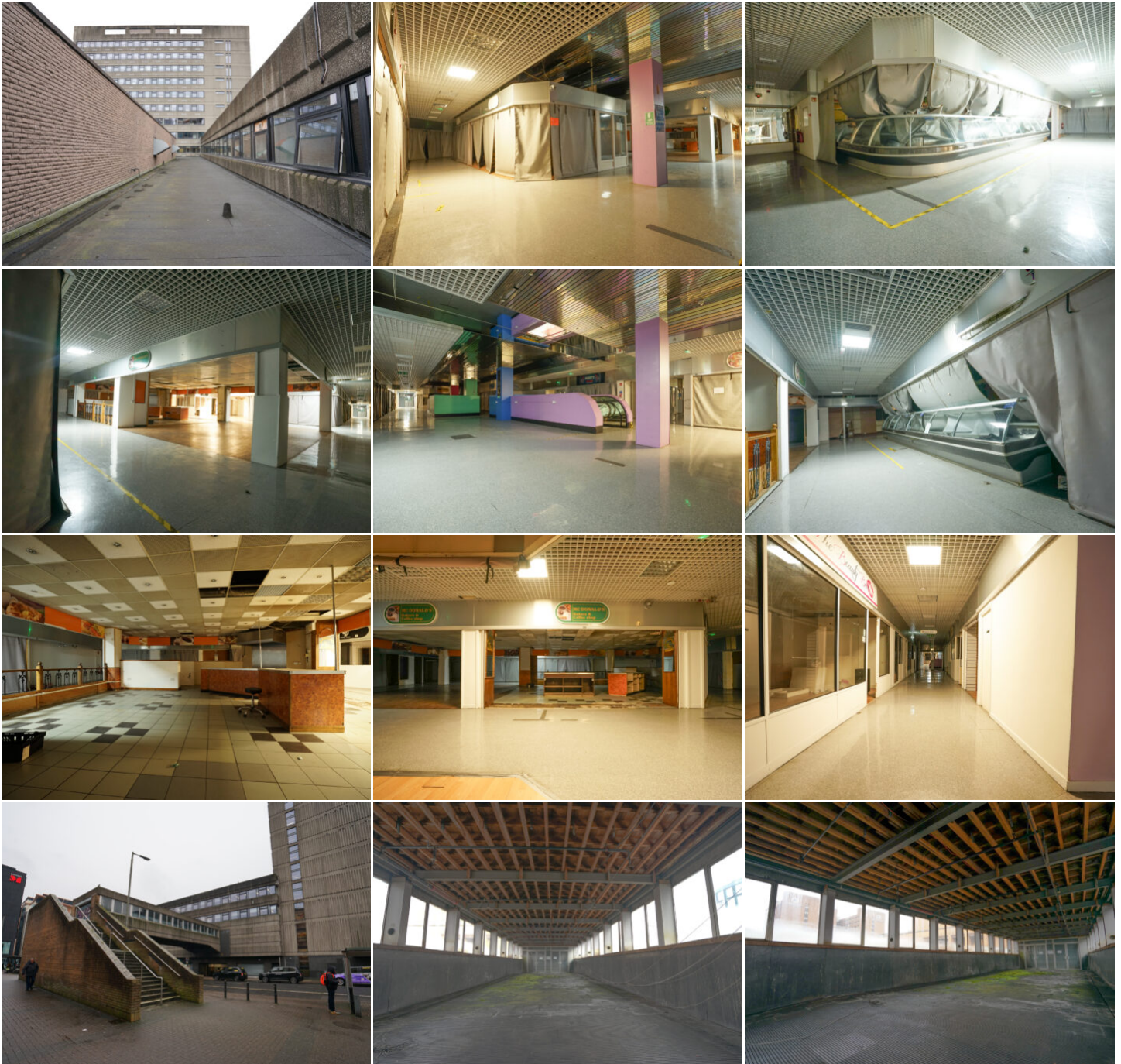


LOCATION HQ

More information available on the [Location HQ website](#)

Tel: +44 (0) 203 302 0664 | E-mail: info@locationhq.co.uk

REF: 186896 REGION: Scotland DISTANCE FROM LONDON: 381 Miles from the M25



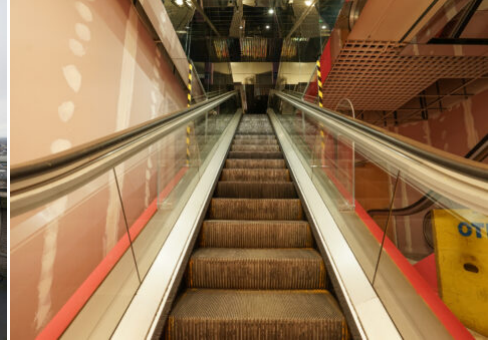


LOCATION HQ

More information available on the [Location HQ website](#)

Tel: +44 (0) 203 302 0664 | E-mail: info@locationhq.co.uk

REF: 186896 REGION: Scotland DISTANCE FROM LONDON: 381 Miles from the M25





LOCATION HQ

More information available on the [Location HQ website](#)

Tel: +44 (0) 203 302 0664 | E-mail: info@locationhq.co.uk

REF: 186896 REGION: Scotland DISTANCE FROM LONDON: 381 Miles from the M25

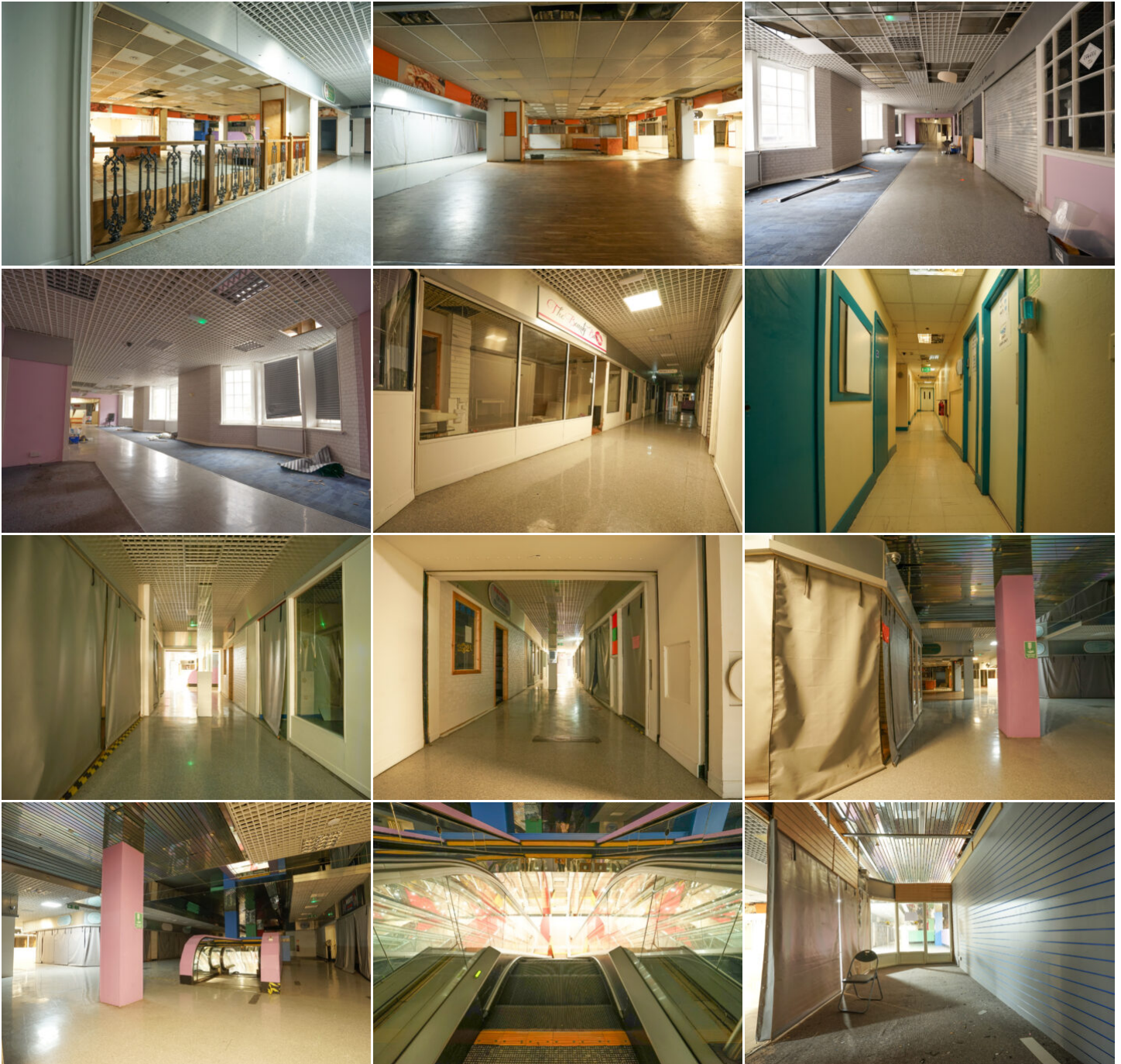


LOCATION HQ

More information available on the [Location HQ website](https://www.locationhq.co.uk)

Tel: +44 (0) 203 302 0664 | E-mail: info@locationhq.co.uk

REF: 186896 REGION: Scotland DISTANCE FROM LONDON: 381 Miles from the M25





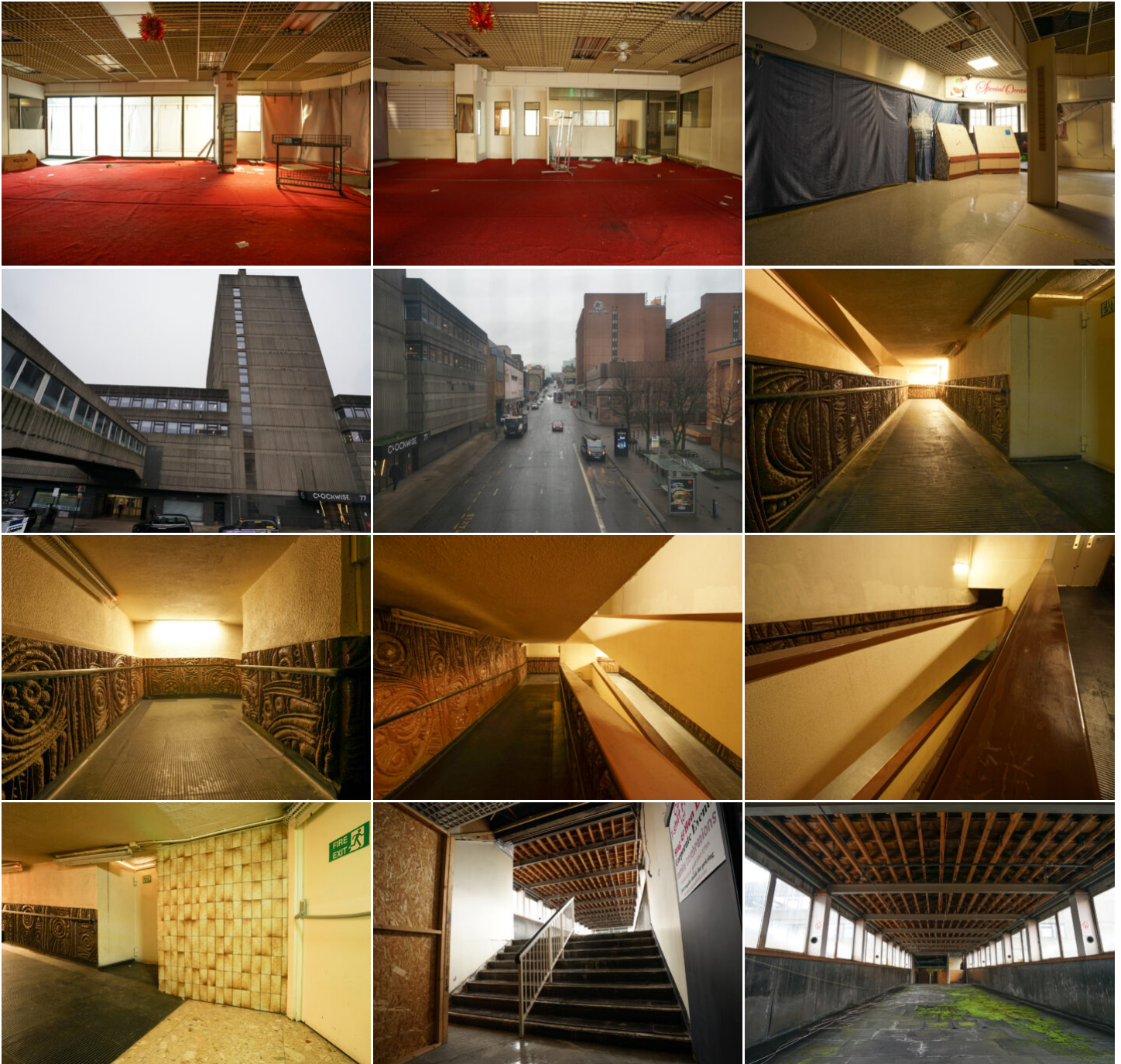
LOCATION HQ

More information available on the [Location HQ website](https://www.locationhq.co.uk)

Tel: +44 (0) 203 302 0664 | E-mail: info@locationhq.co.uk

REF: 186896 REGION: Scotland DISTANCE FROM LONDON: 381 Miles from the M25







LOCATION HQ

More information available on the [Location HQ website](#)

Tel: +44 (0) 203 302 0664 | E-mail: info@locationhq.co.uk

REF: 186896 REGION: Scotland DISTANCE FROM LONDON: 381 Miles from the M25

