

# LOCATION HQ

More information available on the [Location HQ website](https://www.locationhq.co.uk)

Tel: +44 (0) 203 302 0664 | E-mail: [info@locationhq.co.uk](mailto:info@locationhq.co.uk)

REF: 815860 REGION: London DISTANCE FROM LONDON: 10 miles from the M25

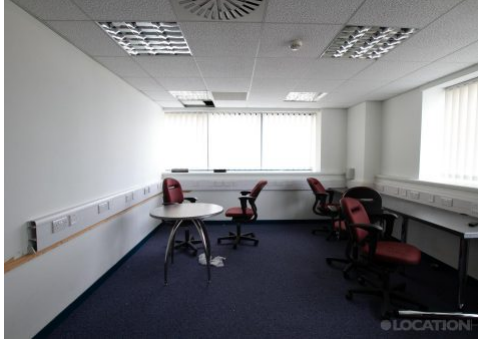


# LOCATION HQ

More information available on the [Location HQ website](#)

Tel: +44 (0) 203 302 0664 | E-mail: [info@locationhq.co.uk](mailto:info@locationhq.co.uk)

REF: 815860 REGION: London DISTANCE FROM LONDON: 10 miles from the M25

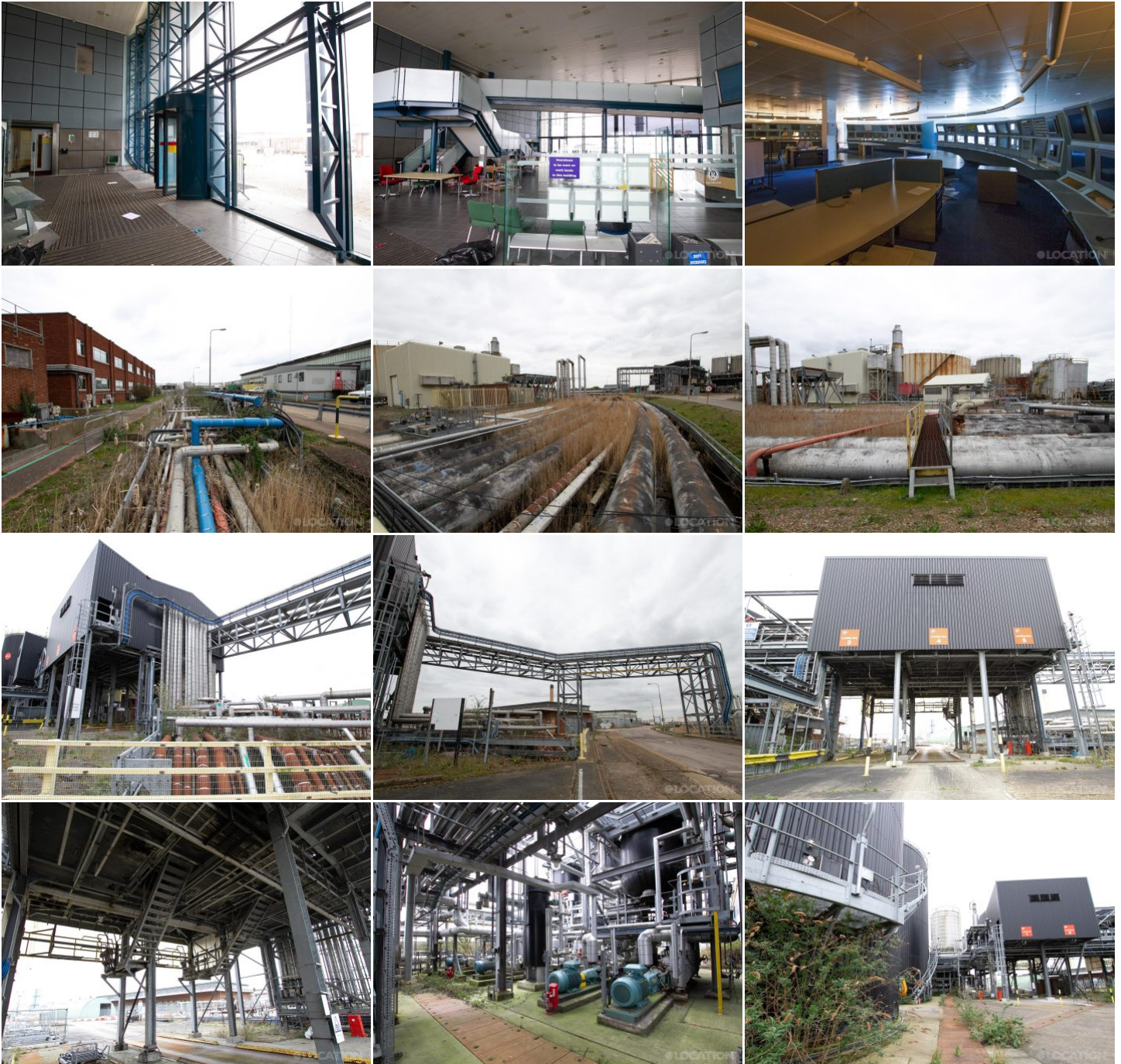


# LOCATION HQ

More information available on the [Location HQ website](https://www.locationhq.co.uk)

Tel: +44 (0) 203 302 0664 | E-mail: [info@locationhq.co.uk](mailto:info@locationhq.co.uk)

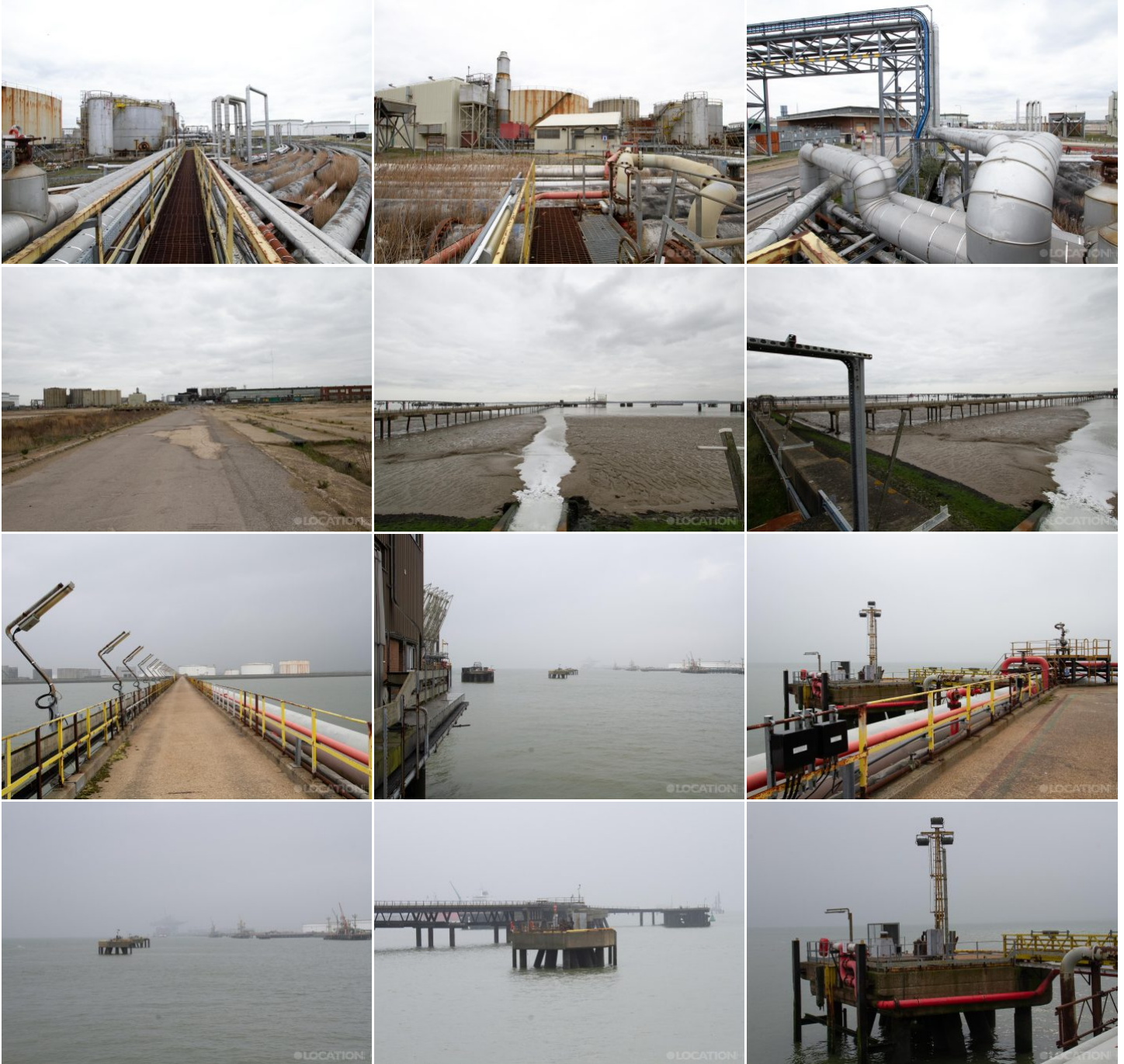
REF: 815860 REGION: London DISTANCE FROM LONDON: 10 miles from the M25



More information available on the [Location HQ website](#)

Tel: +44 (0) 203 302 0664 | E-mail: [info@locationhq.co.uk](mailto:info@locationhq.co.uk)

REF: 815860 REGION: London DISTANCE FROM LONDON: 10 miles from the M25



# LOCATION HQ

More information available on the [Location HQ website](https://www.locationhq.co.uk)

Tel: +44 (0) 203 302 0664 | E-mail: [info@locationhq.co.uk](mailto:info@locationhq.co.uk)

REF: 815860 REGION: London DISTANCE FROM LONDON: 10 miles from the M25



More information available on the [Location HQ website](https://www.locationhq.co.uk)

Tel: +44 (0) 203 302 0664 | E-mail: [info@locationhq.co.uk](mailto:info@locationhq.co.uk)

REF: 815860 REGION: London DISTANCE FROM LONDON: 10 miles from the M25



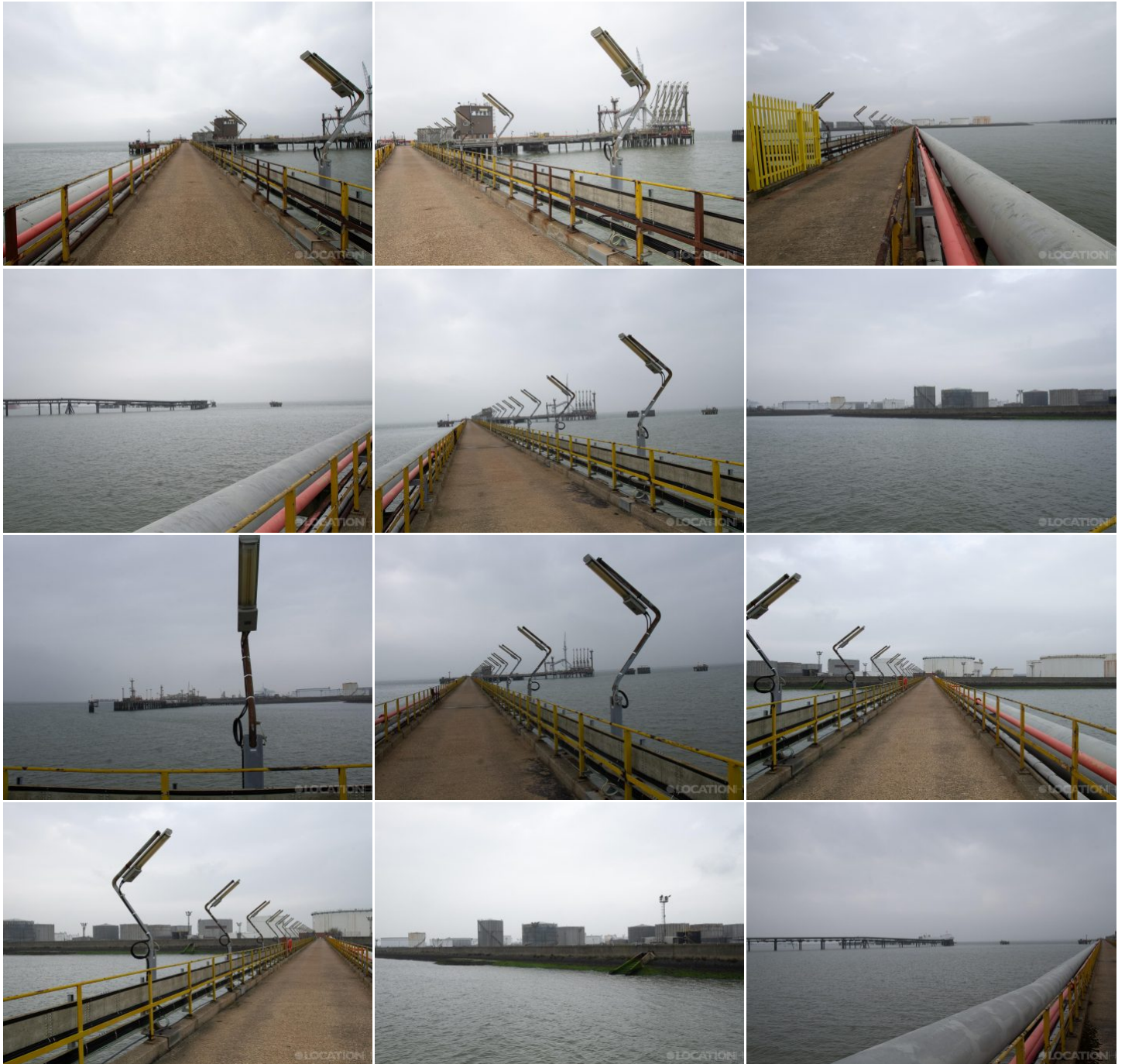


# LOCATION HQ

More information available on the [Location HQ website](#)

Tel: +44 (0) 203 302 0664 | E-mail: [info@locationhq.co.uk](mailto:info@locationhq.co.uk)

REF: 815860 REGION: London DISTANCE FROM LONDON: 10 miles from the M25





# LOCATION HQ

More information available on the [Location HQ website](https://www.locationhq.co.uk)

Tel: +44 (0) 203 302 0664 | E-mail: [info@locationhq.co.uk](mailto:info@locationhq.co.uk)

REF: 815860 REGION: London DISTANCE FROM LONDON: 10 miles from the M25





[More information available on the Location HQ website](#)

Tel: +44 (0) 203 302 0664 | E-mail: [info@locationhq.co.uk](mailto:info@locationhq.co.uk)

REF: 815860 REGION: London DISTANCE FROM LONDON: 10 miles from the M25

