



# LOCATION HQ

More information available on the [Location HQ website](#)

Tel: +44 (0) 203 302 0664 | E-mail: [info@locationhq.co.uk](mailto:info@locationhq.co.uk)

REF: 971392 REGION: Buckinghamshire DISTANCE FROM LONDON: 17 miles from the M25





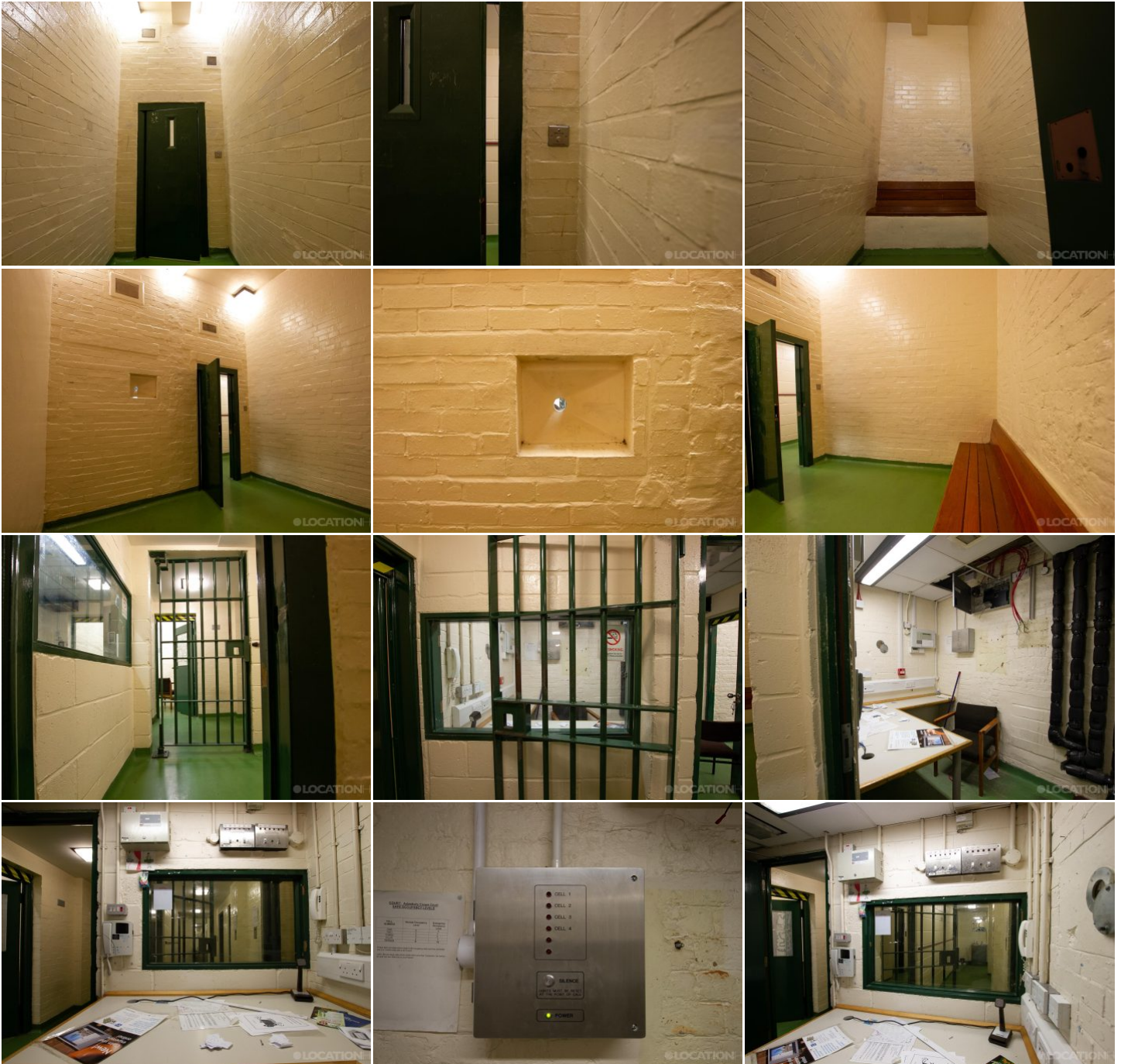
# LOCATION HQ

More information available on the [Location HQ website](#)

Tel: +44 (0) 203 302 0664 | E-mail: [info@locationhq.co.uk](mailto:info@locationhq.co.uk)

REF: 971392 REGION: Buckinghamshire DISTANCE FROM LONDON: 17 miles from the M25





# LOCATION HQ

More information available on the [Location HQ website](http://www.locationhq.co.uk)

Tel: +44 (0) 203 302 0664 | E-mail: [info@locationhq.co.uk](mailto:info@locationhq.co.uk)

REF: 971392 REGION: Buckinghamshire DISTANCE FROM LONDON: 17 miles from the M25



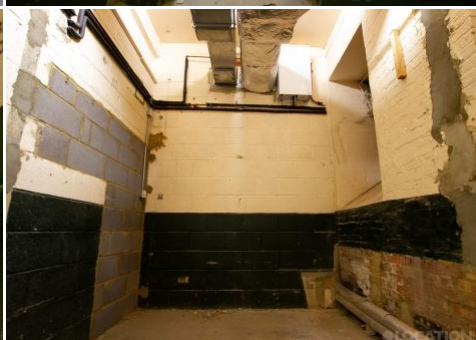
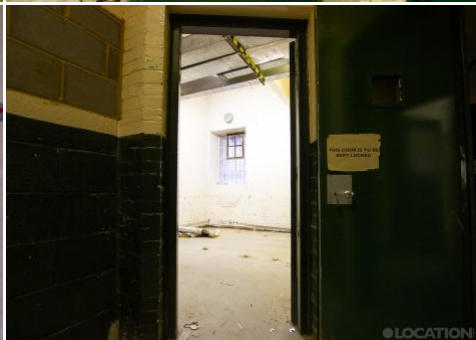


# LOCATION HQ

More information available on the [Location HQ website](#)

Tel: +44 (0) 203 302 0664 | E-mail: [info@locationhq.co.uk](mailto:info@locationhq.co.uk)

REF: 971392 REGION: Buckinghamshire DISTANCE FROM LONDON: 17 miles from the M25





# LOCATION HQ

More information available on the [Location HQ website](#)

Tel: +44 (0) 203 302 0664 | E-mail: [info@locationhq.co.uk](mailto:info@locationhq.co.uk)

REF: 971392 REGION: Buckinghamshire DISTANCE FROM LONDON: 17 miles from the M25





# LOCATION HQ

[More information available on the Location HQ website](#)

Tel: +44 (0) 203 302 0664 | E-mail: [info@locationhq.co.uk](mailto:info@locationhq.co.uk)

REF: 971392 REGION: Buckinghamshire DISTANCE FROM LONDON: 17 miles from the M25

